

# Full Service for Rail Gearboxes and Drives

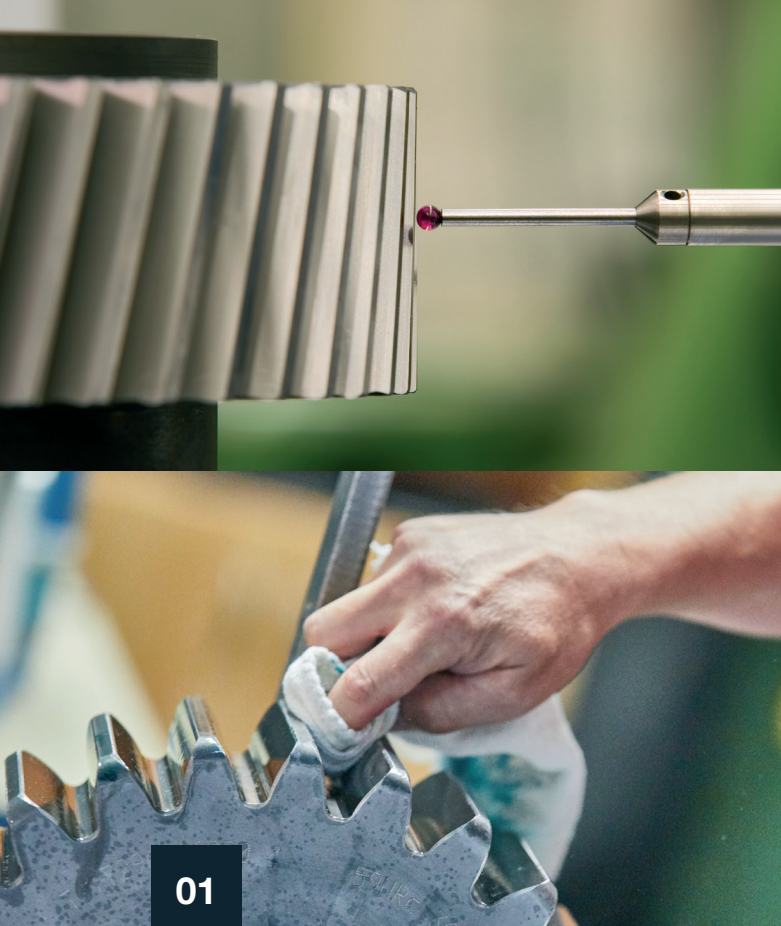
All Brands...

[gmeinder.com](http://gmeinder.com)

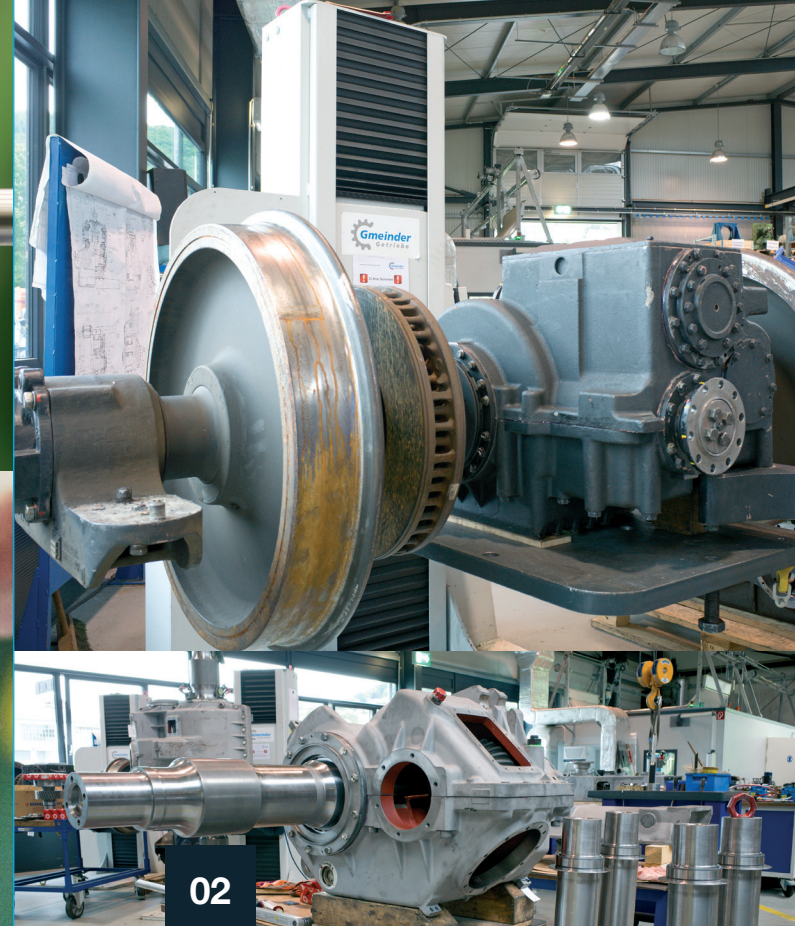


*A Wikov Company*

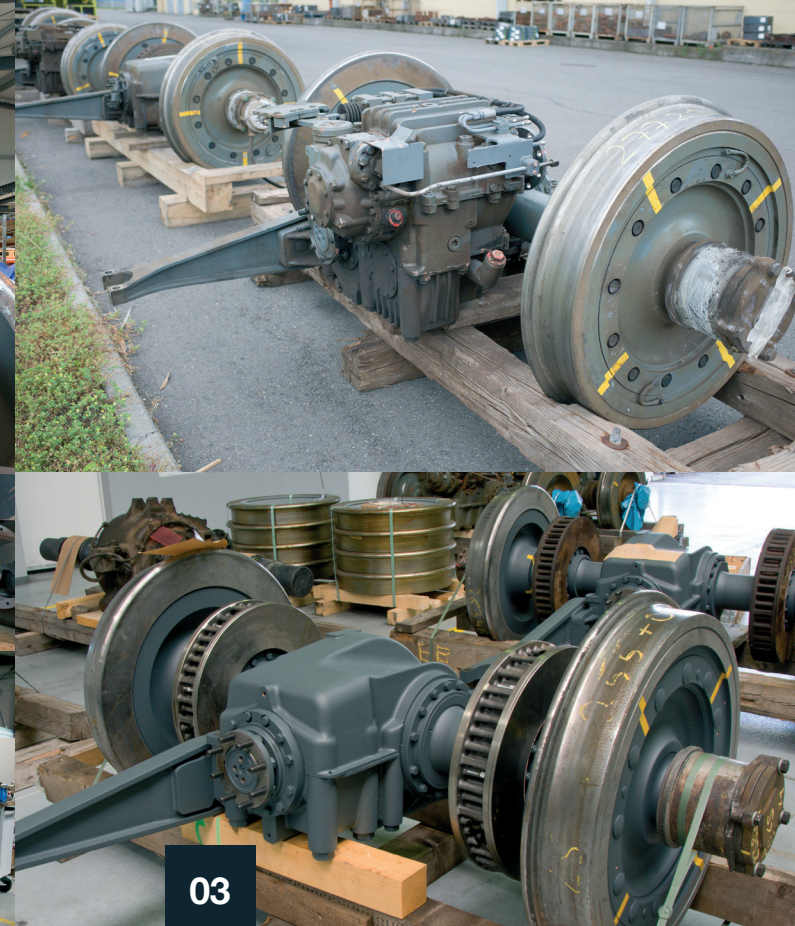




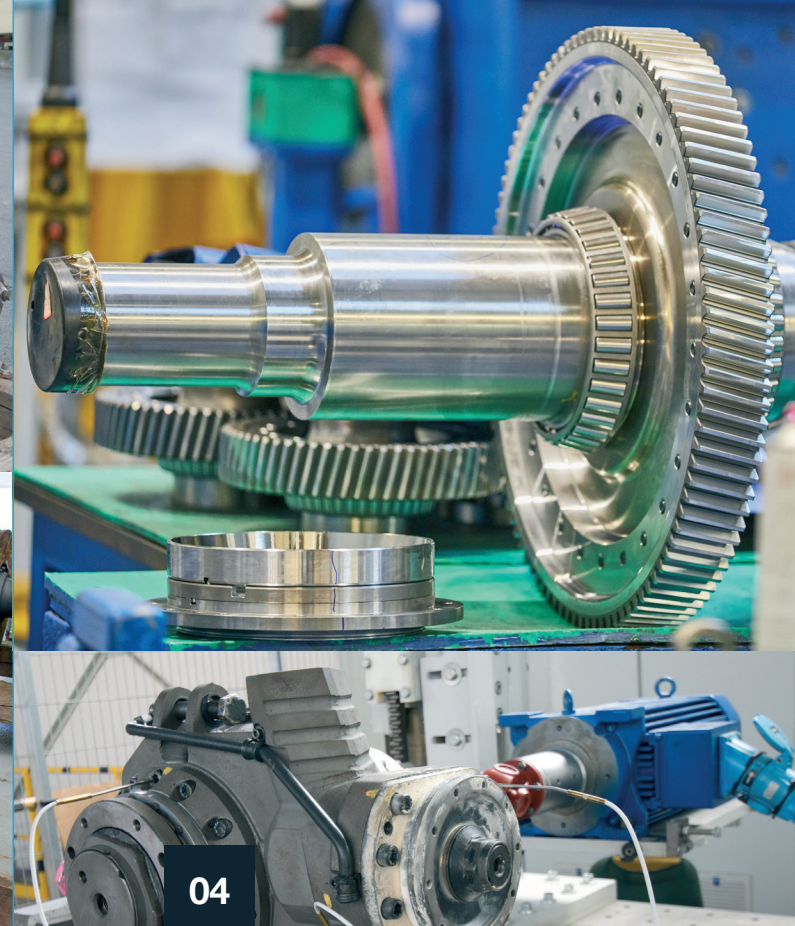
01



02



03



04

## Analysis and investigation inspection

- Highly qualified staff
- Investigation strictly according to established Gmeinder guidelines
- Experience in all kinds of axle gearboxes
- Also all components of a complete wheelset drive can be handled

## General inspection

- Regular check of the gearbox or wheelset drive according to the inspection intervals
- Replacement of wear parts
- Check of all other parts
- Replacement of damaged components
- Afterwards the gearbox resp. wheelset drive is well prepared for operation till next inspection

## All-round carefree package

- Servicing of all wheelset components including gearbox, wheelset bearings, wheels, brake discs and axle shafts
- Keeps workload for customer as low as possible
- Gmeinder cares about all components as package

## Modification and adaption

- Update the gearbox to the state of the art
- Increasing the reliability and availability of the gearbox
- Replacing older defective components (switching devices, bearings, etc.) by the latest versions
- Improving the sealing system
- Optimizing the tooth modification of gears according to the latest technology



# Our services in detail

## GGT GMEINDER GETRIEBE-TECHNIK GmbH

### World of Rail Drives

With the latest technology and decades of experience, we offer technical, cost-effective and quality-controlled services. We prove our competence, our know-how and our flexibility every day. Our modern equipped service workshop provides optimal conditions for the handling of all kinds of gearboxes of any brand. Also complete wheel set drives can be handled. Get to know the range of our service here.





05

## Nondestructive examination

- Especially for safety related components like torque rods and axle shafts
- Magnetic particle test
- Ultrasonic test
- Concentricity test

06

## Education and training

- Maintenance training
- Installation training
- Individually arranged training

### Company is certified according to:

- DIN EN ISO 9001:2015
- DIN EN ISO 14001:2015
- DIN 27201-7
- DIN EN 15085-2
- Deutsche Bahn – Q1
- ECM

# GGT GMEINDER GETRIEBETECHNIK GmbH

## World of Rail Drives

Anton-Gmeinder-Straße 9-19, 74821 Mosbach, Germany  
T +49 6261 - 806 - 0 F +49 6261 - 806 - 160  
E info@gmeinder.de

[gmeinder.com](http://gmeinder.com)



A Wikov Company